



FLCY Yokosuka

Recruit To Asia Presentation

Asia... explore the history, culture, and food.
Enjoy the scenic beauty, festive
music, and taste the delicious
cuisine from all the regions.



Ready. Resourceful. Responsive!

Updated: November, 2014

Objective & Outline

◆ FLCY Yokosuka

- ◆ *AOR*
- ◆ *Supported Commands*
- ◆ *Organization*

◆ The Work

- ◆ *Operational Logistics*
- ◆ *Regional Shore Support*
- ◆ *Fuel Operation*
- ◆ *Contracting*
- ◆ *Ship Repair*

◆ The Benefits

- ◆ *School*
- ◆ *Healthcare*
- ◆ *MWR*
- ◆ *The Pay*

◆ Life Overseas

- ◆ *Shopping & Eating*
- ◆ *Housing*
- ◆ *Travel*

FLC Yokosuka

◆ **Vision**

- ◆ Know the warfighter's needs and vigorously drive our maritime support efforts towards creating the most effective logistics solutions to meet those needs.

◆ **Mission**

- ◆ To serve the Asia Pacific Region's forward deployed maritime warfighter with 24/7 operational logistics support integrating an extensive service provider network to deliver fuel, material, mail and supply chain services across the U.S. Navy's largest geographical area of responsibility.

FLC Yokosuka

History (1945 to Present)

1940's



1950's



1960's



1970's



U.S. FISCY 2011



FLCY Today



Evolving Geographic Scope

★ FLC Headquarters

★ FLC Sites

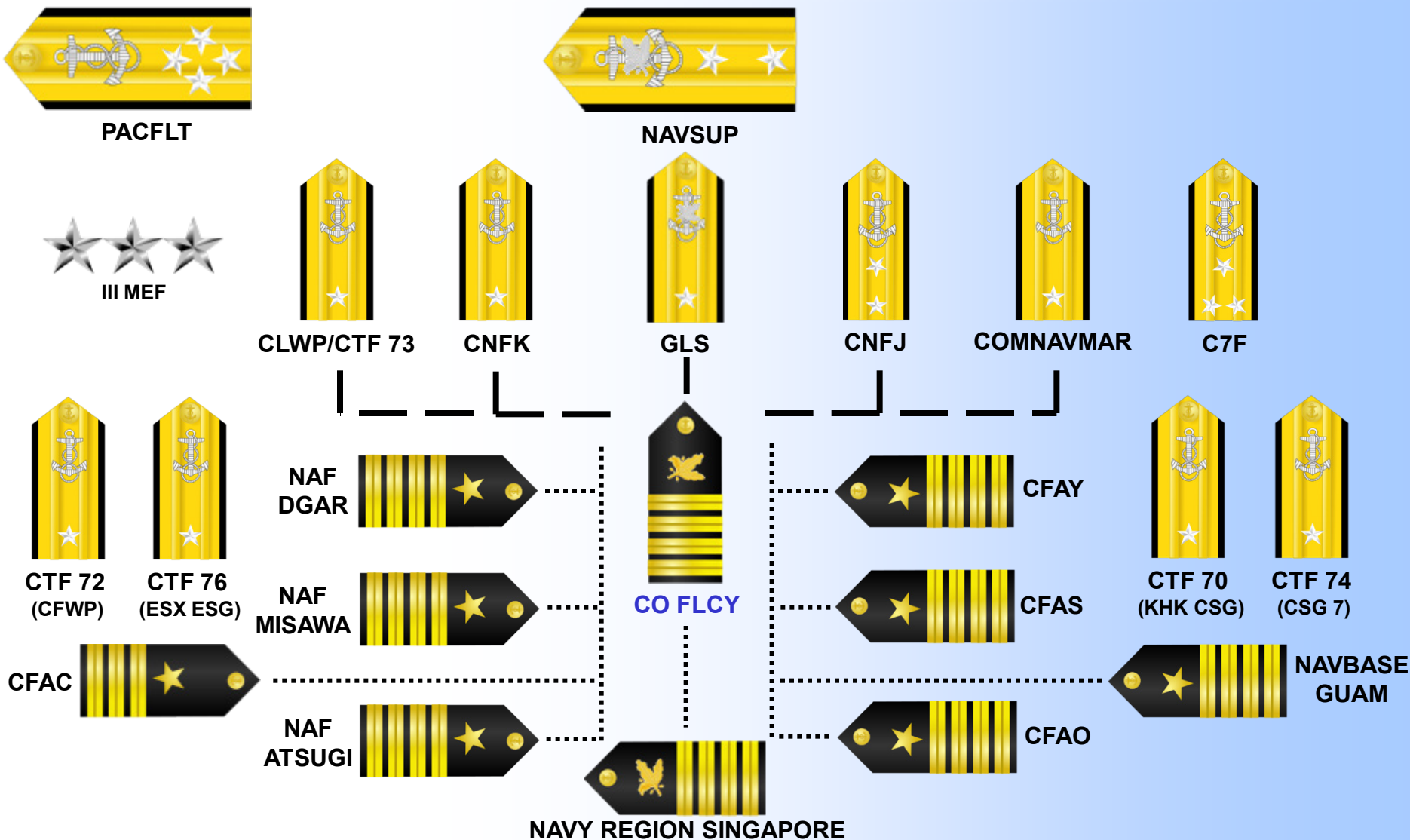
★ Fuel Terminals

★ Husbanding Contracts

★ Voyage Repairs



Integrated with the Fleet



Supported Commands



COMMANDER, US SEVENTH FLEET



CARRIER AIR WING FIVE
• 8 Squadrons



**COMMANDER, SUBMARINE
GROUP SEVEN**



**COMMANDER, US NAVAL
FORCES, JAPAN**



FDNF SHIPS
• 11 Yokosuka
• 6 Sasebo
• 4 Guam



**COMMANDER LOGISTICS GROUP
WESTERN PACIFIC**



MILITARY SEALIFT COMMAND



**NAVAL FACILITIES ENGINEERING
COMMAND FAREAST**



**US NAVAL SHIP REPAIR FACILITY
JAPAN RMC**



Supported Commands



**COMMANDER, US NAVAL
FORCES, KOREA**



JAPAN-BASED FUEL POL
• US AIRFORCE
• US ARMY



DEPARTMENT OF STATE
• US EMBASSIES
• JAKARTA
• HONG KONG
• MANILA



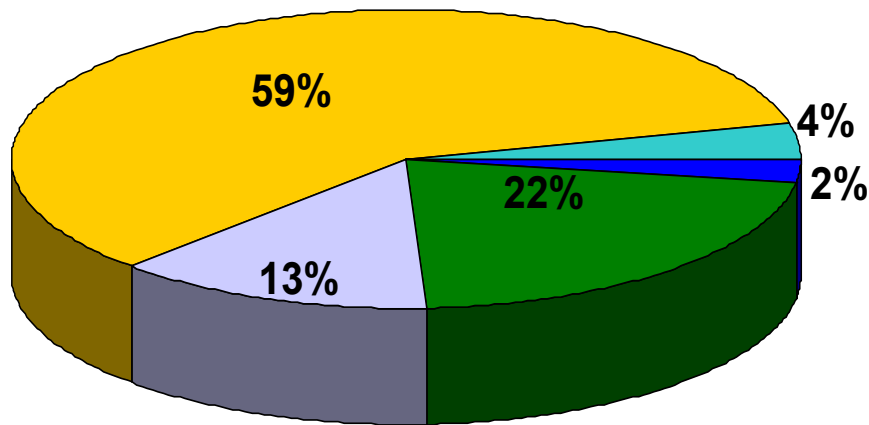
III Marine Expeditionary Force



**COMMANDER US NAVAL
FORCES, MARIANAS**



Employee Demographics



■ OFFICER ■ ENLISTED ■ USCS ■ MLC ■ LN

Billets Authorized

Military*

Officer	31
Enlisted	272
Total	303

Civilian

USCS	165
MLC	736
LN	49
Total	950

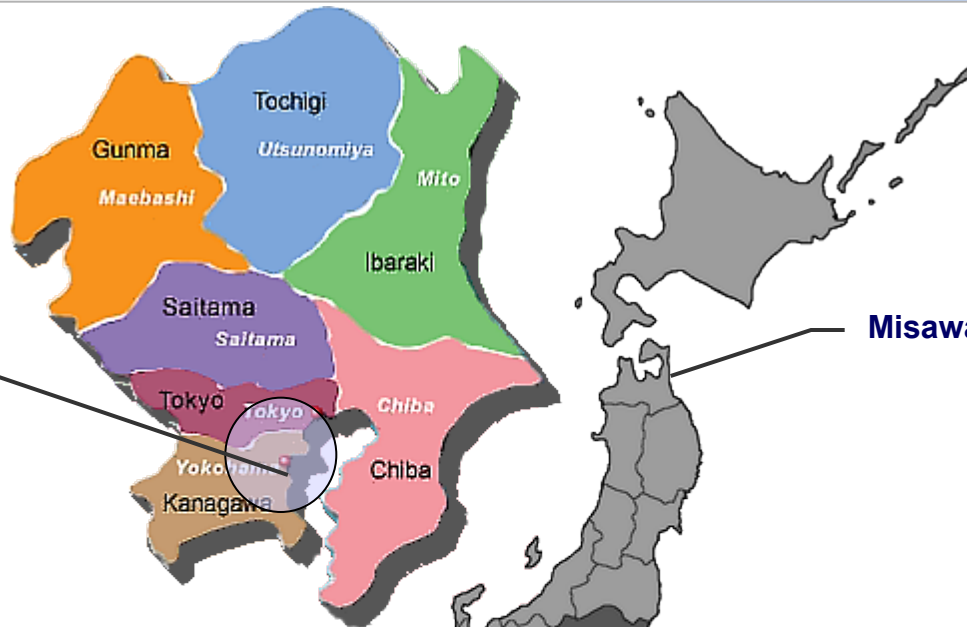
Total Strength 1,253

* Active Component only – there are an additional Reserve Component personnel assigned

Where Is Everything?

Mainland Japan

Camp Fuji
Camp Zama
NAF Atsugi
Sagami Depot
Yokohama Port
Yokosuka Naval Base
Yokota Air Base



Misawa Air Base

Okinawa

MCAS Iwakuni

White Beach
Naval Facility

Kadena Air Base

Sasebo Naval Base



What Are The Benefits?

- ◆ **Additional Leave Accrual:**
 - ◆ *Accrual of 5 days of Home Leave a year*
- ◆ **Environmental Morale Leave (two types):**
 - ◆ *Unfunded (UEML)*
 - ◆ This is a benefit which utilizes military airlift to provide relief by allowing those eligible to travel on DoD owned and operated aircraft at a higher Space-Available priority while traveling on EML orders. Cat III upgrades to Cat II and Cat V upgrades to Cat VI.
 - ◆ *Funded (FEML)*
 - ◆ This is a benefit which utilizes commercial transportation to provide relief for personnel assigned to EML locations that do not have scheduled military airlift.
- ◆ **MWR / Commissary / Exchange Privileges:**
 - ◆ *Civilians can use the MWR Facilities, Commissary and Navy Exchange*

What Are The Benefits?

- ◆ **DoDD Schools or Gov funded private**
- ◆ **Access to Travel:**
 - ◆ *Drive / Train / Fly throughout Asia*
- ◆ **Competitive Gas Prices:**
 - ◆ *Purchase gasoline on base at U.S. prices... not what the host nation pays (well over \$6.00 per gallon)*
 - ◆ Conversion: 1 US gallon = 3.7854 liter
 - ◆ Exchange Rate at Military Banking Facilities (\$1.00/¥108)
- ◆ **Live and Work in a different Culture:**
 - ◆ *Be a part of a diverse work force*
 - ◆ *Build relationships with different cultures*
 - ◆ *Learn a new perspective of Life and Work*

How Much Will I Make?

EXAMPLE: GS-12 STEP 5, with spouse and two children in Japan:

San Diego, California

\$ 85,682 per year

Yokosuka: (Do the Math)

Base Salary:

\$ 68,993

Living Quarter Allowance (Group 3):

\$ 49,500 (Tax Free)

Post Allowance (30%):

\$ 10,080 (Tax Free)

FLCYs' Compensation

\$ 128,573 per year
(\$59,580 Tax Free)

Difference

Substantially more compensation versus stateside employment

<http://aoprals.state.gov/>

THE BENEFITS LISTED ABOVE, DO NOT APPLY TO GUAM (Site MARIANAS)

What Happens To My CONUS Job?

- ◆ **Initial Tour: 3 years**
 - ◆ *2 Years for: Guam, Hong Kong, Korea, Philippines*
- ◆ **DON Employees get Statutory Return Rights for up to five years**
 - ◆ *Return “shall be without reduction in the seniority, status, and tenure”*
 - ◆ *“Shall be placed in the position which he held immediately before his assignment to duty outside the United States, if such position exists.”*
 - ◆ *See Title 10 Sec 1586 for the full script of the law*
- ◆ **Employees of other departments may have other administrative return rights covered under a separate agreement**

Department of Defense Dependents Schools (DoDDS)

Yokosuka Naval Base



Ikego Hills Housing Area



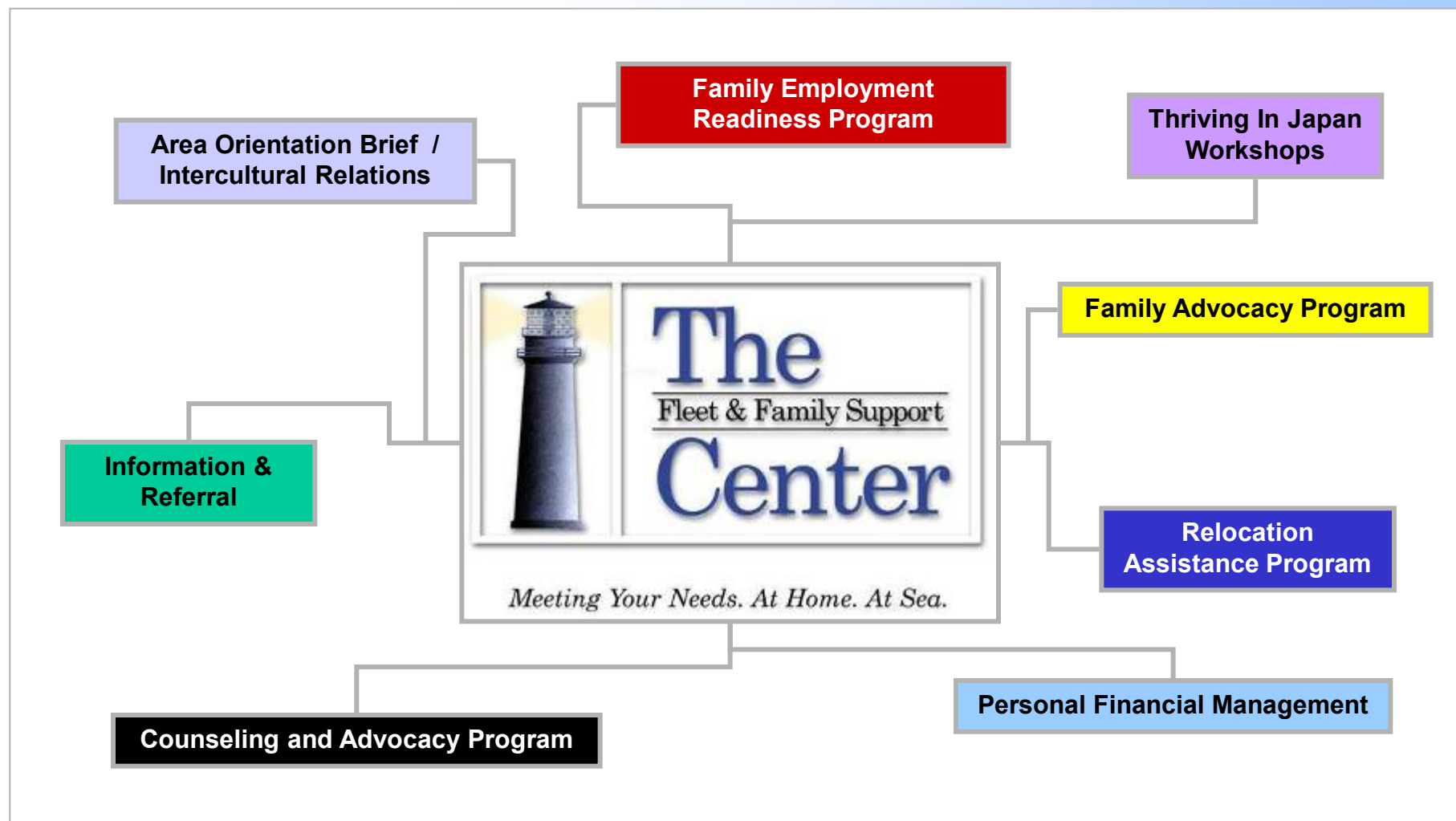
Singapore American School



Location	Community	School
Japan	Atsugi	Lanham ES
	Iwakuni	Perry ES
		Perry HS
	Misawa	Cummings ES
		Edgren HS
		Sollars ES
	Sasebo	Darby ES
		Sasebo ES
		King HS
	Yokohama	Byrd ES
	Yokosuka	Kinnick HS
		Sullivans ES
		Ikego ES
		Yokosuka MS
	Yokota	Joan K. Mendel ES
		Yokota ES - West
		Yokota MS
		Yokota HS
Guam	Guam	Anderson ES
		Anderson MS
		Guam HS
		William McCool E/MS
Okinawa	Kadena	Amelia Earhart IS
		Bob Hope PS
		Kadena ES
		Kadena MS
		Kadena HS
		Stearly Heights ES

<http://www.militaryinstallations.dod.mil/ismart/MHF-MI/>

Family Support



Where do I get Healthcare?

U.S. Naval Hospital, Yokosuka, Japan



Services

With Branch Clinics In:

Atsugi



Chinhae



Diego Garcia



Iwakuni



Sasebo



Primary Care

- Family Practice
- Internal Medicine
- Pediatrics

Ancillary

- Diagnostics
- Radiology
- Occupational Therapy
- Speech Therapy
- Laboratory Services
- Nutrition
- Pharmacy
- Visiting Nurse

Emergency Services

Circuit Providers

- Hand Surgery
- Maternal Fetal
- Medicine
- Pediatric Cardiology
- Podiatry
- Pulmonology

Early Developmental Intervention Screening (EDIS)

Specialty Care

- Adult Intensive Care Unit
- Ambulatory Procedure Unit
- Anesthesiology
- Dermatology
- Community Health
- ENT
- General Surgery
- Mental Health
- Neurology
- OB/GYN
- Ophthalmology/Optometry
- Orthopedics
- Physical Therapy
- Urology

Storks Nest

Dental Services

- Dental Hygiene
- Endodontics
- General Dentistry
- Oral & Maxillofacial Surgery
- Orthodontics
- Pediatric Dentist
- Periodontics
- Prosthodontics

<http://www.nhyoko.med.navy.mil/>

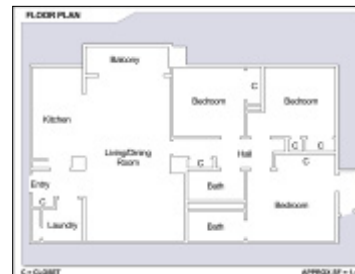
What's The Housing Like?

On Base (Yokosuka)

2 Bedroom High-Rise



3 Bedroom High-Rise



3 Bedroom Wood-Frame



https://www.housing.navy.mil/onestop/_hq/Default.aspx

What's The Housing Like?

Off Base (Yokosuka)

MANSIONS



SINGLE HOUSE



http://housing.cfay.navy.mil/off_base_rentals.htm

Views around Asia

Mainland Japan

Itsukushima Shrine
Torii Gate, Miyajima



Kyoto: Heian Jinju, Stepping Stone Pond



Kamakura



Kyoto: Kinkakuji, Golden Pavilion



Kyoto: Heian Jinju, Covered Bridge



Shopping & Eating

Mainland Japan

Commissary: Yokosuka Naval Base



Tokyo: Sashimi at Tsukiji Market



Sasebo: Ginza



Tokyo: Daiso Harajuku



Largest 100 Yen Store In Takeshita Dori

Tokyo: Ginza Shopping Street



Sasebo: Sasebo Burger



When I'm Not At Work?

Fujiyuki High Land



Tokyo: Disney Land



Universal Studios, Japan



Sumo Wrestling



Bullet Train



Hakone



Yokohama: Sea Paradise



Tokyo: Summer Land

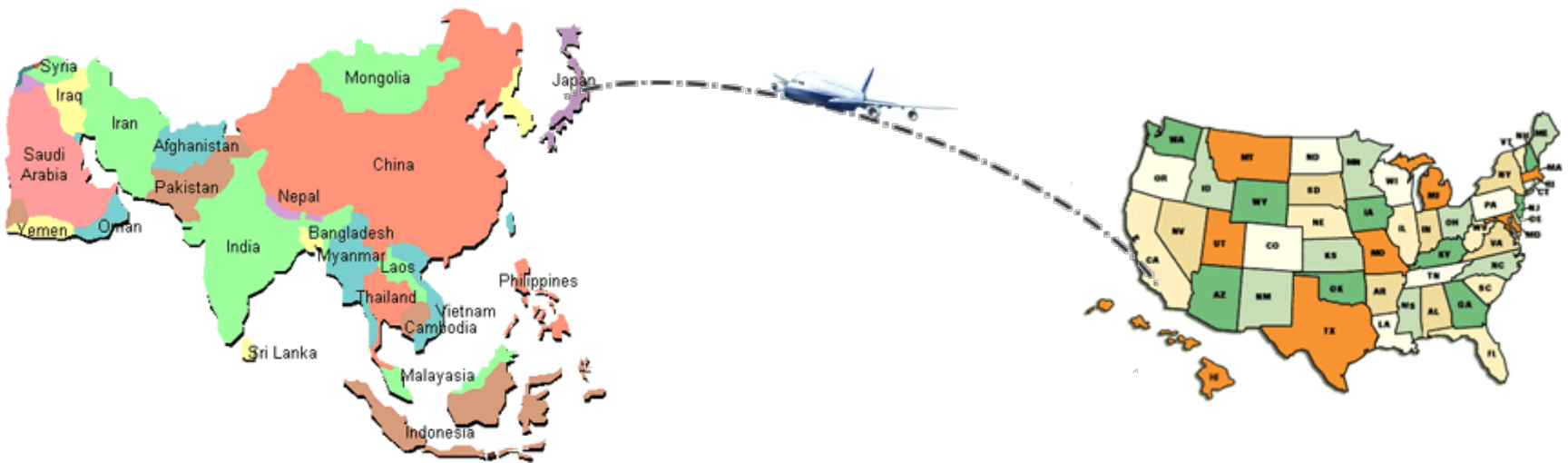


Chiba: Kamogawa SeaWorld



Question & Answer

Any Questions?



<https://www.navsup.navy.mil/navsupflcy>